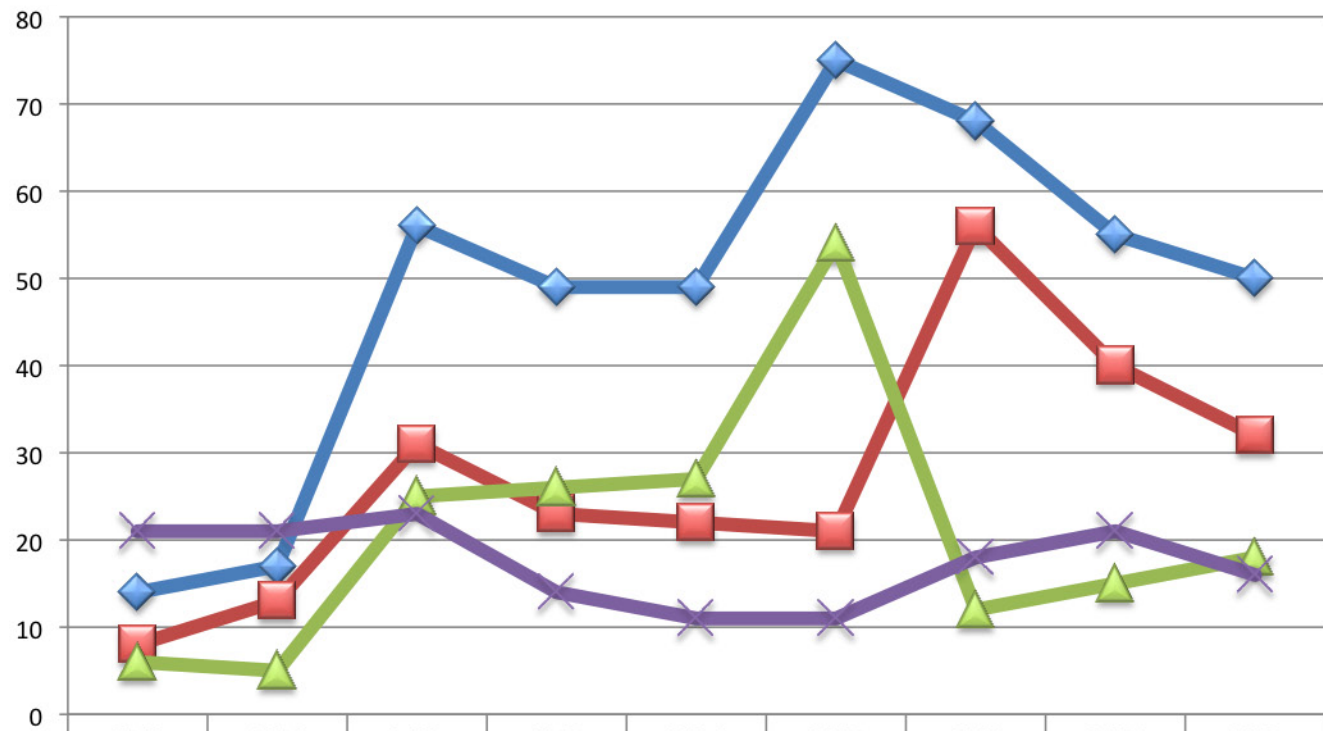




# 2008 Annual Advocacy Report

Seward County CASA recruits, trains and supports community volunteers who advocate for abused and neglected children in the Seward County court system.  
[www.sewardcountycasa.org](http://www.sewardcountycasa.org)

## Seward County CASA Program Activity



	2000	2001	2002	2003	2004	2005	2006	2007	2008
◆ Children under the court's jurisdiction	14	17	56	49	49	75	68	55	50
■ Children with a CASA volunteer	8	13	31	23	22	21	56	40	32
▲ Children without a CASA volunteer	6	5	25	26	27	54	12	15	18
× Number of active CASA volunteers	21	21	23	14	11	11	18	21	16



# 2008 Annual Advocacy Report

Value of volunteer time was provided by The Independent Section. The value of volunteer time is based on the average hourly earnings of all production and nonsupervisory workers on private nonfarm payrolls (as determined by the Bureau of Labor Statistics). Independent Sector takes this figure and increases it by 12 percent to estimate for fringe benefits. Charitable organizations most frequently use the value of volunteer time for communications to show the amount of community support and organization receives from its volunteers. The estimate helps acknowledge the millions of individuals who dedicate their time, talents, and energy to making a difference. Charitable organization use this estimate to quantify the enormous value volunteers provide. In 2008, the value of volunteer time was \$20.25 per hour.

Year	Birth - Age 5						Total in System	Had a CASA	Without a CASA	Active Volunteers	Hours donated including training	Value of hours donated	Miles Driven	Expenses	Income	
	6-11	12-17	18+	Male	Female											
2008	10	6	13	3	19	13	50	32	18	16	1225	\$24,806.25	5970	\$50,008	\$78,878	
2007	11	13	11	5	23	17	55	40	15	21	1417	\$27,645.67	4363	\$36,523	\$40,307	
2006	17	20	15	4	24	32	68	56	12	18	1091	\$20,478.07	4631	\$37,157	N/A	
2005	6	8	4	3	9	12	75	21	54	11	730	\$13,169.20	3961	\$24,300	N/A	
2004	3	6	7	6	11	11	49	22	27	11	858	\$15,057.90	3716	\$24,342	N/A	
2003	0	5	7	11	14	9	49	23	26	14	554	\$9,523.26	2973	\$27,325	N/A	
2002	0	7	9	15	17	14	56	31	25	23	N/A	N/A	N/A	\$26,430	N/A	
2001	0	1	2	10	7	6	17	13	15	21	N/A	N/A	N/A	N/A	N/A	
2000	0	1	1	6	4	4	14	8	6	21	N/A	N/A	N/A	N/A	\$29,445	
1999	N/A	N/A	N/A	N/A	N/A	N/A	N/A	18	N/A	18	N/A	N/A	N/A	N/A	N/A	\$21,595
1998	N/A	N/A	N/A	N/A	N/A	N/A	N/A	N/A	N/A	N/A	N/A	N/A	N/A	N/A	N/A	N/A
1997	N/A	N/A	N/A	N/A	N/A	N/A	N/A	N/A	N/A	N/A	N/A	N/A	N/A	N/A	N/A	N/A
1996	N/A	N/A	N/A	N/A	N/A	N/A	N/A	N/A	N/A	N/A	N/A	N/A	N/A	N/A	N/A	\$8,500

N/A = Not Available